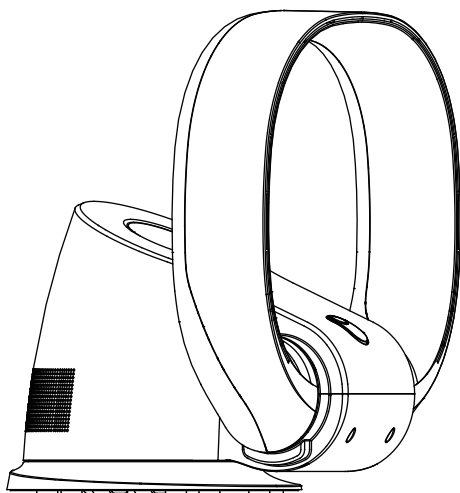


# Jet Circle

## Instruction manual





## ■ Electrical safety and maintenance requirement



### WARNING

1. To avoid fire, electric shock, personal injury, be sure to comply with the following requirement
  2. Other, please follow the relevant national and local electrical regulation
- 
1. Children, the elderly and people with disabilities or lacking experience should be under care and guidance of a responsible person when using this product, children should be under the supervision to ensure that they will not play with the fan as toy
  2. Please use a separate outlet in accordance with the fan's current/ voltage. Don't use multi-purpose socket to use with other electrical appliances at the same time
  3. If the fan does not work due to damaged power cord. Please cut off the power and ask for a qualified person to repair
  4. Don't move the fan when you unplug from outlet
  5. Don't unplug by pulling on cord. You should unplug and grasp the plug, not the cord
  6. Don't operate the fan with a damaged cord or plug, please ask service agent to replace or repair the cord if cord is damaged
  7. Don't stretch the cord or place the cord under strain. keep the cord away from heat source
  8. Don't run the cord under carpeting; don't cover the cord with throw rugs, runners or similar covering. Arrange cord away from traffic area to avoid tripping off the cord
  9. Turn off all control before unplugging, unplug from outlet when not in use for long time. To avoid a tripping hazard. safely coil the cord
  10. Don't put any object into the inlet grille. don't use any opening blocked, keep free of dust, lint, hair and anything that may reduce airflow
  11. The fan should be away from heat source and non-corrosive gas surrounding. It should be placed at horizontal properly leveled surface and allow for 150mm space around the fan to ensure good ventilation
  12. Don't use the fan outdoors or on wet surface
  13. Don't immerse the fan, power cord, plug in the water or other liquids to avoid hazard. Use of extension cord isn't recommended except after testing by qualified person
  14. Don't use in conjunction with or directly next to an air freshener or similar products
  15. Don't use any cleaning agent or lubricants on this fan, unplug before cleaning, carrying and any maintenance
  16. Always carry the fan by the base, don't carry it by the loop amplifier

## ■ Specifications

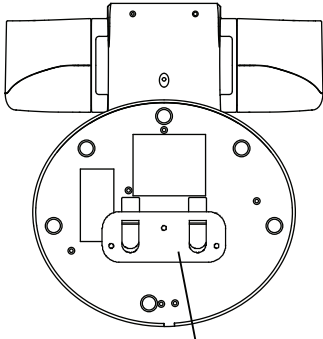
The design is new and innovative. Which has light , fashionable, safe features. The fan can rotate 80 ° and loop can be adjust in 120°

Technical parameters

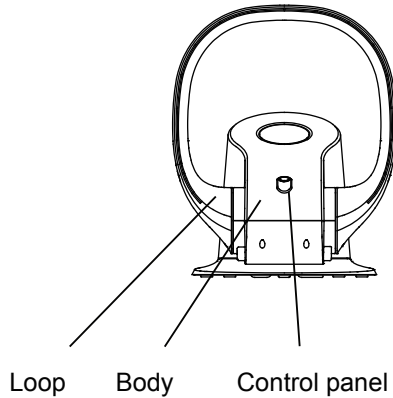
Model no.	Jet Circle	
Rated voltage/frequency	220V-240V 50/60Hz	110V-120V 60HZ
Rated current	0.2A	0.3A
Input power	26W	
Packing size	338*318*360mm	
Net weight	1.9kg	

(Above parameters for reference only, subject to the product nameplate)

## ■ Operating guidance

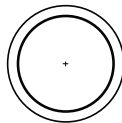


Bracket for wall-mounted



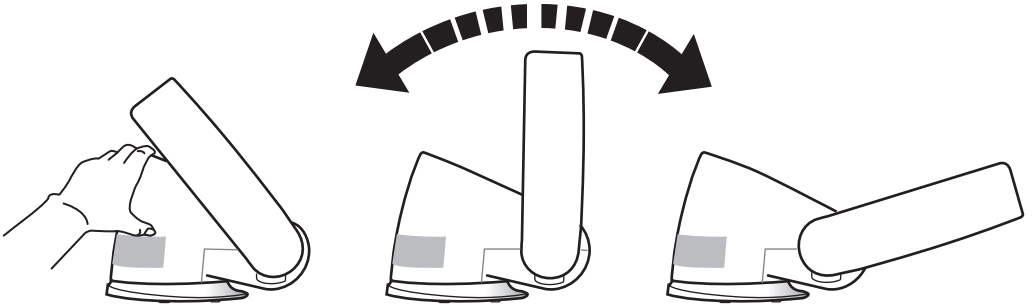
Loop Body Control panel

### 1. Control panel



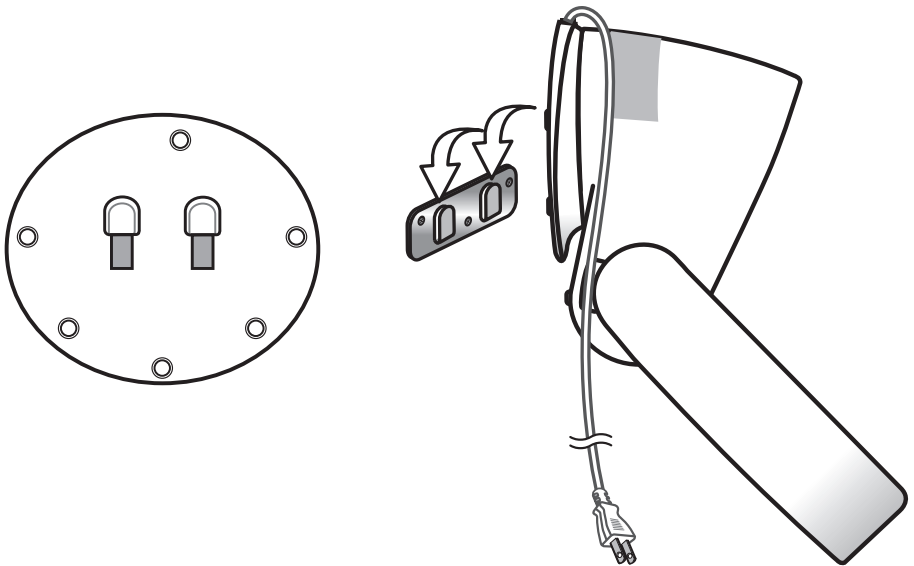
ON/OFF

## 2. Tilt function



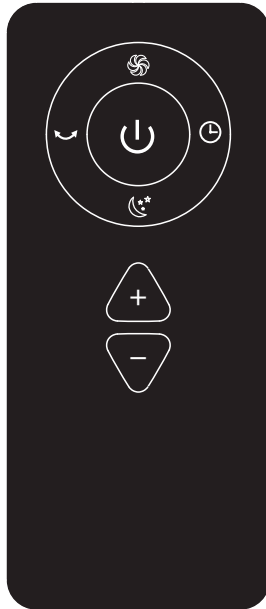
Adjust base forward or backward for required airflow angle








## 3. Wall-mounted instruction



Fix the bracket (included in the box) on the wall with concrete nail, then match the groove underneath the fan base and fix it on the bracket

## Remote control



1. “”, Power on and off.
2. “”, Speed regulating to be stronger airflow.
3. “”, Speed regulating to be smaller airflow
4. “”, the fan will be swing after press it.
5. “”, Time 1 to 8 hours.
6. “”, The wind is strong.
7. “”, The wind is soft.

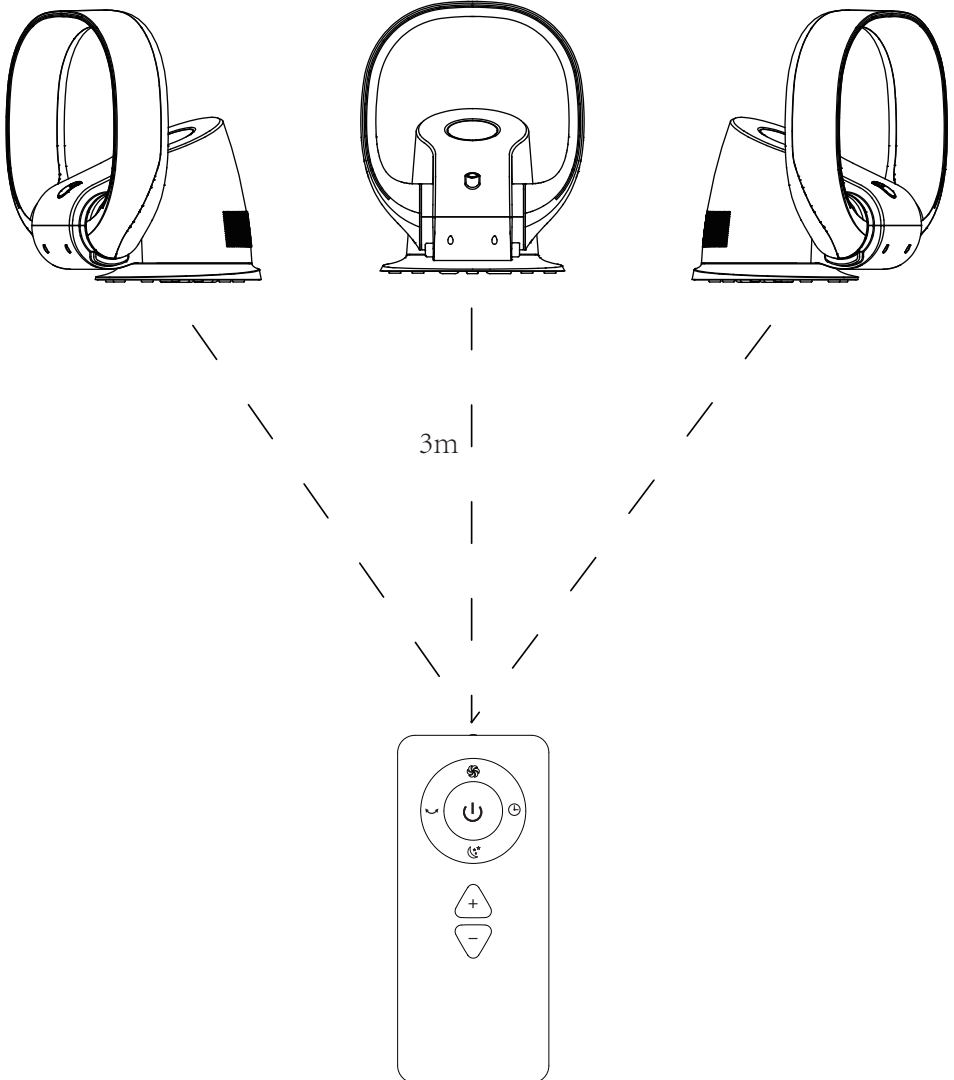
\*\*\*\*Ticks mean the remote control is working when you press.

## The receiving signal range of remote control

A: fan swinging toward left around 40 degree

B: The fan is aim at remote control

C: The fan swinging toward right around 40 degree



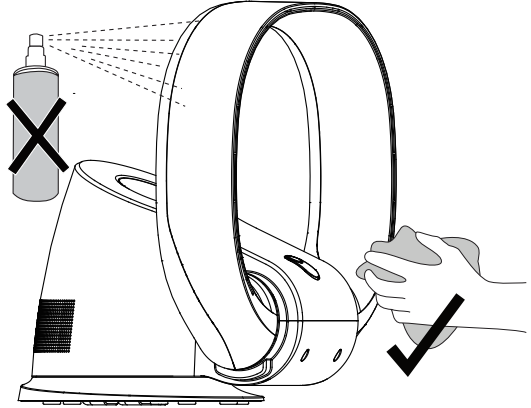
Optimal effect can be reached if use the remote control within the range of A from C  
We suggest that the remote control to aim at the receiver at the front of fan

# Cleaning

Please unplug from outlet before cleaning

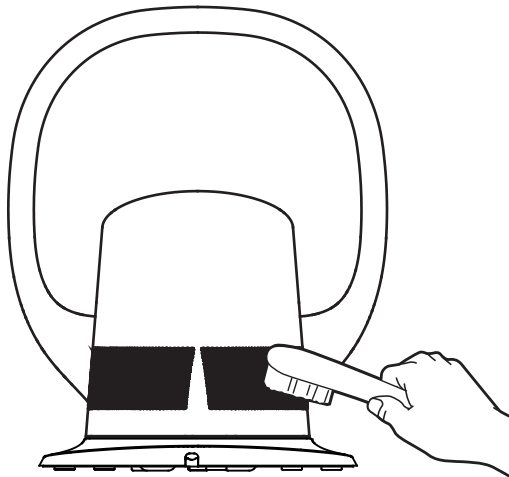
## 1. Cleaning loop

TO clean, wipe with a dry or damp cloth. Do not use detergents or polishes to clean the fan.



## 2. Cleaning blockage

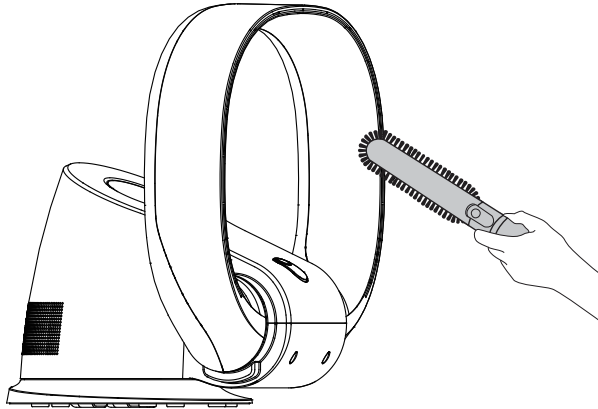
Look for blockage in the air inlet holes, Use a soft brush to remove debris





### 3. Cleaning aperture

Look for blockage in the small aperture inside the loop amplifier. Use a soft brush to remove debris



#### ■ Troubleshooting guide

problem	Possible cause	Suggest solution
Power indicator light, but does not work	The voltage is too lower	Stop the fan and don't restart until the voltage is normal
Power indicator does not light	No electricity	1.Check if socket is electrified 2.pls ask serviceman to check
Airflow is smaller	Inlet or outlet is blocked	Clean the blockages





